

The first 0.014" Radiofrequency (RF)-capable crossing wire

Product Specifications

Maximum OD	0.014"
Lengths	190 cm & 300 cm
Tip Configurations	Straight Angled 20°
Tip Strength	40 g
Catheter Compatibility	Minimum 0.014" guidewire-compatible catheters

Ordering Information

Product Code	Description	Length	Tip Shape
PW14-190-S	PowerWire® 14 RF Guidewire Kit 190 cm Straight	190 cm	Straight 
PW14-300-S	PowerWire® 14 RF Guidewire Kit 300 cm Straight	300 cm	Straight 
PW14-190-20A	PowerWire® 14 RF Guidewire Kit 190 cm Angled 20°	190 cm	Angled 
PW14-300-20A	PowerWire® 14 RF Guidewire Kit 300 cm Angled 20°	300 cm	Angled 

The PowerWire® Family of RF Guidewires



Outer Diameter	0.014"	0.035"
Length(s)	190 cm & 300 cm	250 cm
Tip Configurations	Straight Angled - 20°	Straight Angled - 20°, 30°, 40°
Tip Strength	Straight Tip - 40 g Angled Tip - 40 g	Straight Tip - 75 g, 110 g Angled Tip - 110 g
Catheter Compatibility	Minimum 0.014" guidewire-compatible catheters	Minimum 4F catheters

PowerWire® RF Guidewires must be used with an approved Baylis Radiofrequency Puncture Generator.



Baylis Medical Technologies Inc.
2645 Matheson Blvd East
Mississauga, ON Canada L4W 5S4
Tel: 1 (888)-505-4885
www.baylismedtech.com

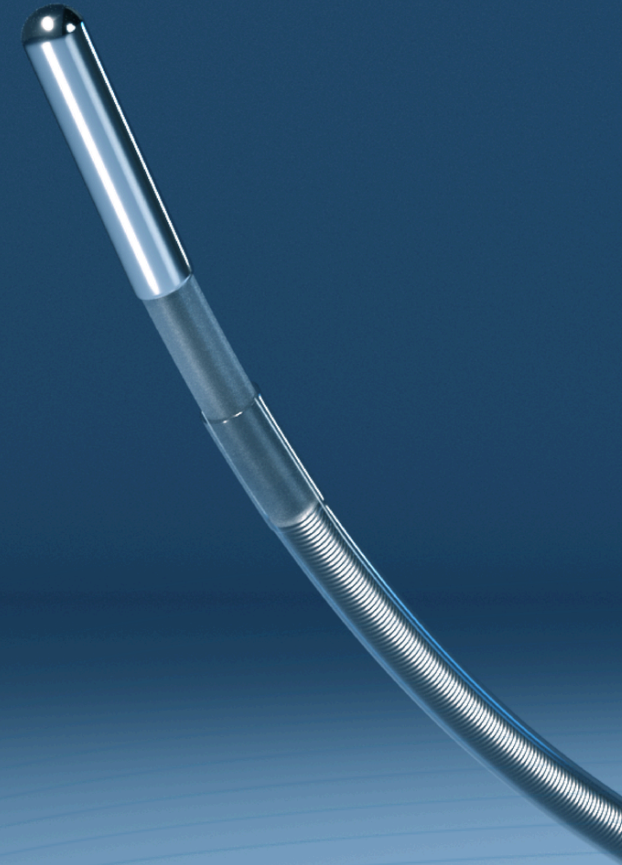
***The PowerWire® 14 RF Guidewire is intended to create a channel in totally occluded peripheral vessels 3mm or greater, including vessels with stents.**

PRM-00936 EN J-1 V-2 © Baylis Medical Technologies Inc., 2025. The Baylis Medical Technologies logo, Advancing Technology. Transforming Care., PowerWire and the PowerWire Pro logo are trademarks or registered trademarks of Baylis Medical Technologies Inc. in the United States and/or other countries. Baylis Medical Technologies Inc. reserves the right to change specifications or to incorporate design changes without notice and without incurring any obligation relating to equipment previously manufactured or delivered. Patents pending and/or issued. CAUTION: Federal Law (USA) restricts the sale of these devices to or by the order of a physician. Before use, consult product labels and inserts for any indications, contraindications, hazards, warnings, cautions and instructions for use.

Products shown may not be approved or available for sale in all jurisdictions.

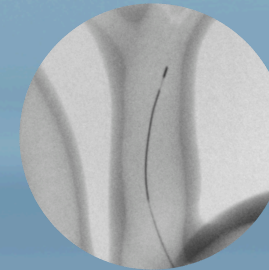
PowerWire® 14 RF Guidewire

*Designed to cross tough, fibrous occlusions in native and stented peripheral vessels.**



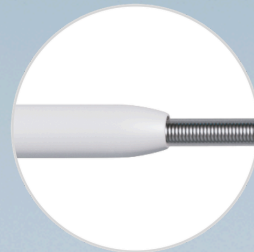
SMALLER PROFILE. BUILT FOR PRECISION.

PowerWire[®] 14
RF Guidewire



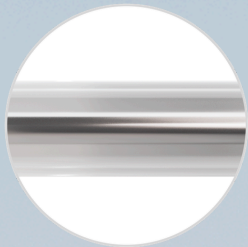
Visibility

Radiopaque tip with a proximal radiopaque coil for improved visibility under fluoroscopy



Outer Diameter

0.014"



Wire Composition

Stainless steel core wire with PTFE insulation (transparent)

Safe Crossing Technology

Contact with metal terminates RF energy

